

6th Grade
Dec 2, 2020

Please get out your classwork and video notes from yesterday.

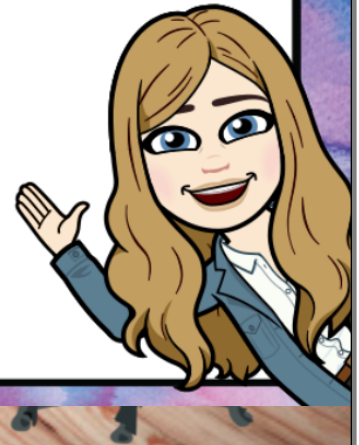
Today we will:

- review WS
- review video notes
- begin HW

HOMEWORK:

1-2 Skills Practice WS

ALEKS 60 min and 5 topics due Dec 8



Yesterday's homework: pg 13-14

Extra Practice

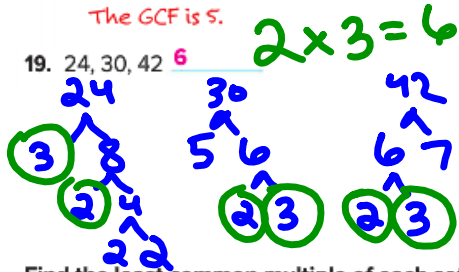
Find the greatest common factor of each set of numbers.

17. 15, 20 5

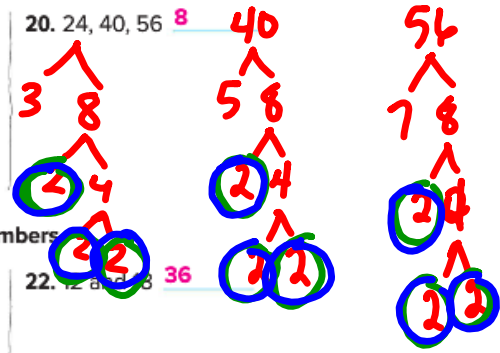
Homework Help → factors of 15: 1, 3, 5, 15
 factors of 20: 1, 2, 4, 5, 10, 20
 The common factors are 1 and 5.
 The GCF is 5.

18. 30, 48, 60 6

19. 24, 30, 42 6



20. 24, 40, 56 8



Find the least common multiple of each set of numbers.

21. 3 and 5 15

multiples of 3: 3, 6, 9, 12, 15, 18, 21, 24, 27, 30
 multiples of 5: 5, 10, 15, 20, 25, 30
 The common multiples are 15 and 30.
 The LCM is 15.

22. 12 and 18 36

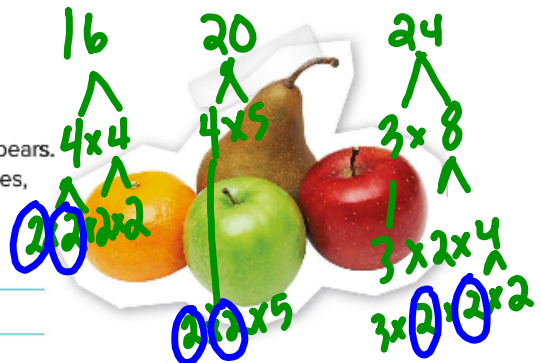
23. 5, 10, and 15 30

24. 9, 12, and 18 36

25. A grocery store clerk has 16 oranges, 20 apples, and 24 pears. The clerk needs to put an equal number of apples, oranges, and pears into each basket. What is the greatest number of baskets that can be made so that no fruit is left?

4 baskets

$2 \times 2 = 4$



26. **MP Identify Repeated Reasoning** The science department buys the equipment shown in the table. They bought all three items this year. In how many years will they have to buy all three items again?

20 years

Item	Time Bought
Microscopes	every 5 years
Safety goggles	every 4 years
Test tubes	every 2 years

M: 5, 10, 15, 20, ...
 G: 4, 8, 12, 16, 20, ...
 T: 2, 4, 6, 8, 10, 12, 14, 16, 18, 20, ...

Power Up! Test Practice

27. Drusilla replaces the light bulb in the hall closet every 9 months and replaces the air filter every 6 months. She just replaced both items this month. After how many months will she replace both the light bulb and the air filter? Select all that apply.

12 months 18 months 36 months 48 months

28. Macy is painting a design that contains two repeating patterns. One pattern repeats every 8 inches. The other repeats every 12 inches. The design is 19 feet long. Both patterns begin at the same place. Use the pattern pieces to create a sample of the design. Use the sample to determine the number of times the patterns begin in the same place.



8, 16, 24, ...
12, 24, 36, ...

8-inch pattern:

12-inch pattern:

Spiral Review

Write each fraction in simplest form. 5.NF.5b

29. $\frac{9}{18} = \frac{1}{2}$

30. $\frac{21}{35} = \frac{3}{5}$

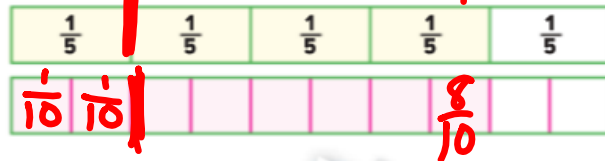
31. $\frac{36}{48} = \frac{3}{4}$

$\frac{36}{48} \div \frac{6}{6} = \frac{6}{8} \div \frac{2}{2}$
 $= \frac{3}{4}$

32. Josiah ran $\frac{4}{5}$ mile. How many tenths are equal to $\frac{4}{5}$ mile? Use bar diagrams to find the answer. 5.NF.5b

$\frac{8}{10}$

$\frac{4}{5} \times \frac{2}{2} = \frac{8}{10}$



33. Pizza Palace cuts a medium pizza into 8 slices. The same size pizza at Pizza Pioneers is cut into 16 slices. Jasmine ate 4 slices of a medium pizza from Pizza Pioneers. What fraction of the pizza from Pizza Palace is equal to $\frac{4}{16}$?

Explain. 5.NF.5b
 $\frac{2}{8}, \frac{4}{16} \div \frac{2}{2} = \frac{2}{8}$

$\frac{4}{16} = \frac{1}{4}$



Name _____
 Unit _____ Lesson _____ Due Date _____

RATIOS

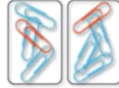
Ratio: A comparison of two quantities by division. Ratios are usually written as a fraction.

- 3 kinds: part to part
- part to whole
- whole to whole

WE DO:

Example

1. Write the ratio in simplest form that compares the number of red paper clips to the number of blue paper clips. Then explain its meaning.



$$\frac{\text{red}}{\text{blue}} = \frac{2}{6} \div \frac{2}{2} = \frac{1}{3}$$

There is one red paper clip for every 3 blue paper clips.

Write the ratio in simplest form that compares the number of suns to the number of moons. Then explain its meaning.



$$\frac{\text{suns}}{\text{moons}} = \frac{4}{6} \div \frac{2}{2} = \frac{2}{3}$$

There are two suns for every 3 moons.

b. A pet store sold the animals listed in the table in one week. Write the ratio of cats to pets sold that week. Then explain its meaning.

Pet	Number Sold
Birds	10
Dogs	14
Cats	8

$$\frac{\text{cats}}{\text{pets}} = \frac{8}{32} \div \frac{8}{8} = \frac{1}{4}$$

One cat is sold for every 4 pets sold.

YOU DO:

Write each ratio as a fraction in simplest form. Then explain its meaning. (Example 1)

1. $\frac{2 \text{ flutes}}{1 \text{ drum}}$ ^{As 2} there are two flutes for every one drum.

flutes:drums

2. $\frac{4 \text{ sandwiches}}{10 \text{ milk cartons}}$ ² There are 2 sandwiches for every 5 milk cartons.

sandwiches to milk cartons

3. A class has 6 boys and 15 girls. What is the ratio of boys to girls?

(Example 2) $\frac{6 \text{ boys}}{15 \text{ girls}} \div \frac{3}{3} = \frac{2}{5}$

4. The table shows the number of books Salvador has read. Find the ratio of mystery books to the total. Explain its meaning. (Example 3)

Type	Number of Books
Mystery	10
Nonfiction	7
Science Fiction	5
Western	2

$\frac{10}{24} \div \frac{2}{2} = \frac{5}{12}$ There are 5 mystery books for every 12 books.

5. Divide 33 photos into two groups so the ratio is 4 to 7. (Example 4)

$\frac{4}{7} + \frac{4}{7} + \frac{4}{7} \rightarrow \frac{12}{21} \div \frac{3}{3} = \frac{4}{7}$



HOMEWORK



Name _____

Unit ____ Lesson _____ Due Date _____

Unit 1 Lesson 2 Skills Practice

Ratios

For Exercises 1–10, write each ratio as a fraction in simplest form. Then explain its meaning.

1. 3 sailboats to 6 fan boats

2. 4 tulips to 6 daffodils

$$\frac{3}{6} \div \frac{3}{3} = \frac{1}{2}$$

For every one sailboat there are 2 fan boats

3. 5 ducks to 30 geese

4. 5 baseballs to 25 softballs

$$\frac{5}{30} \div \frac{5}{5} = \frac{1}{6}$$

5. 6 poodles to 18 beagles

6. 10 brown eggs to 12 white eggs

7. **WALLPAPER** The design on Santana's wall includes 16 pink stripes and 20 green stripes. Find the ratio of pink stripes to green stripes.

8. **JAZZ BAND** In the jazz band at Wyatt's school, there are 15 trumpets and 9 trombones. Find the ratio of trombones to trumpets.

9. **WILDLIFE PARK** At a wildlife park, Zoey counted 10 lions and 14 tigers. What is the ratio of lions to tigers?

10. **MAILBOX** In one week, Latrina received 18 letters and 8 bills. What was the ratio of bills to letters?

11. **GYM CLASS** Mr. Riley allowed a class of sixth graders to choose an activity for their gym class. What is the ratio of students playing volleyball to the *total* number of students? Write the ratio as a fraction in simplest form. Then explain its meaning.

Gym Class Activities	
Activity	Students
Volleyball	12
Softball	21
Soccer	3

12. **FRUIT SALAD** In a fruit salad, there are 12 strawberries, 14 grapes, 6 kiwis, and 4 papayas. Find the ratio of kiwis to the *total* number of pieces of fruit in the fruit salad. Write the ratio as a fraction in simplest form. Then explain its meaning.