

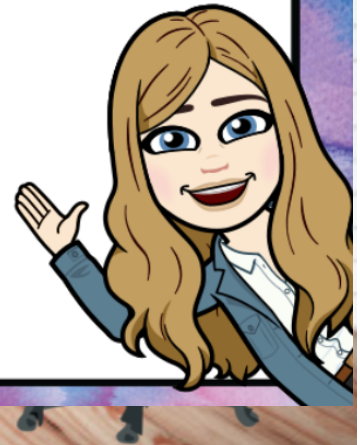
6th Grade
Dec 7, 2020

Today we will:
-do some examples
that you will write
in your binder as
notes
-work on Skills
Practice WS

HOMEWORK:

Skills Practice WS

ALEKS 60 min and 5
topics due Dec 8



Examples--write these directly in your binder for notes.

① Sally shot 20 baskets
in 4 min.

Nico shot 42 baskets
in 6 min.

How many more baskets
per min. did Nico shoot?

$$\text{Sally: } \frac{20 \text{ baskets}}{4 \text{ min}} \div \frac{4}{4} = \frac{5 \text{ bas.}}{1 \text{ min}}$$

$$\text{Nico: } \frac{42}{6} \div \frac{6}{6} = \frac{7 \text{ bas.}}{1 \text{ min}}$$

$$7 - 5 = 2 \text{ more baskets per min.}$$

② A dragonfly can fly 18 mi. in 30 min. How far can it fly in one min?

$$\frac{18 \text{ mi.}}{30 \text{ min.}} \div \frac{30}{30} = \frac{\frac{3}{5} \text{ mi}}{1 \text{ min}}$$

$$30 \overline{)18.0}^6$$

$$\frac{18}{30} \div \frac{6}{6} = \frac{\frac{3}{5} \text{ mi}}{1 \text{ min}}$$

Work on this WS in class. If everyone gets done, we will start to go over it.

 Name _____
CLASSROOM Unit ___ Lesson ___ Due Date _____

Lesson 3 Skills Practice

Rates

Write each rate as a unit rate.

1. 14 hours in 2 weeks
2. 36 pieces of candy for 6 children
3. 8 teaspoons for 4 cups
4. 8 tomatoes for \$2
5. \$28 for 4 hours
6. 150 miles in 3 hours
7. \$18 for 3 CDs
8. 48 logs on 6 trucks
9. Write the ratio *\$12 dollars for 3 tickets* as a unit rate.

10. **CHORES** Wayne raked 30 bags of leaves in 3 hours. If he raked the same number of bags each hour, how many bags of leaves did he rake in one hour?
11. **QUIZZES** Mr. Ordonez gives his math students 34 quizzes during 17 weeks of school. If he gave the same number of quizzes each week, how many quizzes does Mr. Ordonez give his students every week?
12. **TOURS** It cost Mrs. Sapanaro \$245 for her and 6 people to take a day-long guided tour of the Everglades. How much does the guided tour cost per person?
13. **RUNNING** Stephanie ran 1 lap in 6 minutes. At this rate, how far would she run in 30 minutes?
14. **ALTITUDE** In general, the air temperature decreases 12°F for every 4,000 feet increase in altitude. If a hiker climbs 3,000 feet, by how much can she expect the temperature to decrease?

$$4000 \overline{) 12.000}$$

15. **PURCHASES** One bottle of shampoo costs \$6 for 8 ounces. A second bottle costs \$4 for 5 ounces of shampoo. Which has the lower unit rate? How much lower?

