

6th Grade
Jan 12, 2021

Today we will:

- review HW
- do in-class WS

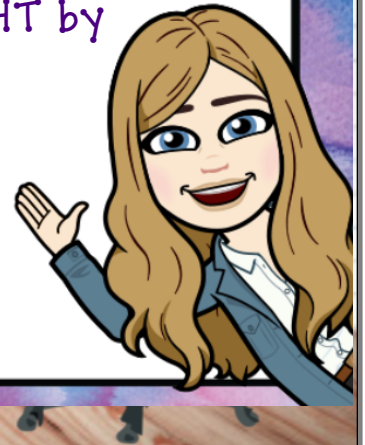
Are there any THQs
to be turned in?

HOMEWORK:

HW Practice WS

Quiz Friday

ALEKS assignment:
60 min and 5 topics
due TONIGHT by
11:59pm



Name _____ My Homework _____

Independent Practice

Go online for Step-by-Step Solutions



Write each percent as a decimal. (Examples 1–3)

1. $35\% = 0.35$



2. $2\% = 0.02$



3. $31\% = 0.31$

4. $95\% = 0.95$

Write each decimal as a percent. (Examples 4 and 5)

5. $0.22 = 22\%$

6. $0.79 = 79\%$

7. $0.1 = 10\%$

8. $0.16 = 16\%$

9. **Financial Literacy** A bank offers an interest rate of 4% on a savings account. Write 4% as a decimal. (Examples 1–3)

0.04
↑

10. When making a peanut butter and jelly sandwich, 96% of people put the peanut butter on first. Write 96% as a decimal. (Examples 1–3)

0.96

11. In a recent year, 0.12 of Americans downloaded a podcast from the Internet. What percent is equivalent to 0.12? (Example 6)

12%

12. In a recent year, the number of homes with digital cameras grew 0.44 from the previous year. Write 0.44 as a percent. (Example 6)

44%

13. **Financial Literacy** The formula $I = prt$ gives the simple interest I earned on an account where an amount p is deposited at an interest rate r for a certain number of years t . Use the table to order the accounts from least to greatest interest earned after 5 years.

Accounts at First Savings Bank		
Account	p (\$)	r (%)
A	350	4
B	500	3.5
C	280	4.25



Lesson 3 Homework Practice

Percents and Decimals

Express each percent as a decimal.

1. 29%

2. 63%

3. 4%

4. 9%

5. 48%

6. 16%

7. 10%

8. 32%

9. ENERGY The United States gets about 39% of its energy from petroleum. Write 39% as a decimal.

10. SCIENCE About 8% of the earth's crust is made up of aluminum. Write 8% as a decimal.

Express each decimal as a percent.

11. 0.45

12. 0.12

13. 0.68

14. 0.73

15. 0.2

16. 0.7

17. 0.95

18. 0.46

19. **POPULATION** In 2000, the number of people 65 years and older in Arizona was 0.13 of the total population. Write 0.13 as a percent.

20. **GEOGRAPHY** About 0.41 of Hawaii's total area is water. What percent is equivalent to 0.41?

Replace each ● with <, >, or = to make a true sentence.

21. 26% ● 0.3

22. 0.9 ● 9%

23. 4.7 ● 47%

24. **ANALYZE TABLES** A batting average is the ratio of hits to at bats. Batting averages are expressed as a decimal rounded to the nearest thousandth. Show two different ways of finding how much greater Derek Jeter's batting average was than Jorge Posada's batting average. Express as a percent.

New York Yankees, 2009 Batting Statistics	
Player	Batting Average
Derek Jeter	0.334
Alex Rodriguez	0.286
Jorge Posada	0.285
Hideki Matsui	0.274

$$\begin{array}{r} 0.334 \\ - 0.285 \\ \hline \end{array}$$

$$\begin{array}{r} 33.4\% \\ - 28.5\% \\ \hline \end{array}$$