

6th Grade  
Jan 14, 2021

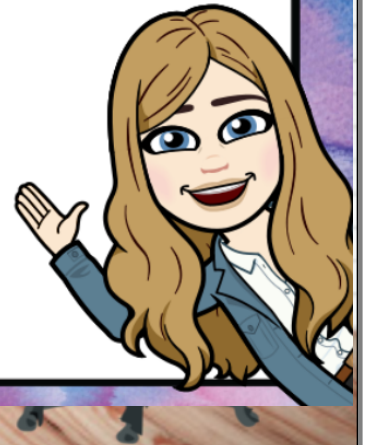
Today we will:

-review percents  
with a math puzzle  
activity

HOMEWORK:

Study for quiz Friday

ALEKS assignment:  
60 min and 5 topics  
due Monday by 11:59pm







45%  
7.5


$7\frac{1}{2}$  or 750%

$$45\% = \frac{45}{100} =$$

$$45\% = 0.45$$

$$7.5 = 7\frac{5}{10} = 7\frac{5}{5 \cdot 2} = 7\frac{1}{2}$$

$$7.50 = 750\%$$

 Name \_\_\_\_\_  
Unit \_\_\_\_ Lesson \_\_\_\_ Due Date \_\_\_\_\_

# A PERCENT PUZZLE


### A Puzzle of Equivalence

Directions:

1. Cut the pieces of the puzzle apart
2. Match the equivalent fractions, decimals, and percents on each side of the puzzle piece.
3. Continue this process until all puzzle pieces match and form a 3 by 4 piece puzzle.
4. Glue or Tape the completed puzzle to another sheet of paper.

27/50

.75

.35

3/8

2/3

.68

14.5%

9/10

19/61

7 1/2

.85

4/5

70%

.375

.5

47%

3/20

.9

.123

75%

02/20

87.5%

15%

3/4

7/20

.75

98%

.6

3/5

100%

9/11

5/7

1/3

7/10

1/6

80%

.7

54%

.333

19%

67%

02/6

7/3

Top Left Corner

3/4

53%

45%

7.5

