

6th Grade
Jan 29, 2021

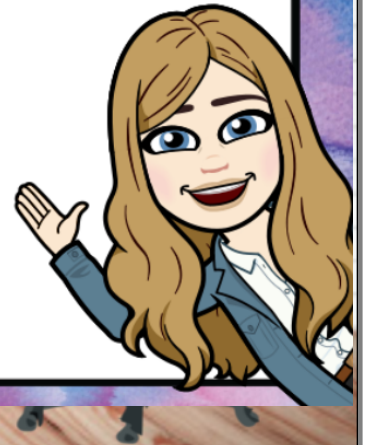
Today we will:

- review HW
- work on white boards
- work on Extra Practice WS

HOMEWORK:

Project due Feb 5

ALEKS assignment:
60 min and 5 topics
due Monday by
11:59pm



Unit 2 Lesson 4 Reteach

Percents Greater Than 100% and Percents Less Than 1%

A percent greater than 100% equals a number greater than 1.

A percent less than 1% equals a number less than 0.01 or $\frac{1}{100}$.

Examples

Write each percent as a decimal and as a mixed number or fraction in simplest form.

280%

$$280\% = \frac{280}{100} \quad \text{Definition of percent}$$

$$= 2.8 \text{ or } 2\frac{4}{5}$$

0.12%

$$0.12\% = \frac{0.12}{100} \quad \text{Definition of percent}$$

$$= 0.0012 \text{ or } \frac{3}{2,500}$$

Exercises

Write each percent as a decimal and as a mixed number or fraction in simplest form.

1. 200%

$$\overset{w}{2.00} \\ = \overset{w}{2}$$

2. 750%

$$\overset{w}{7.50} \\ 7\frac{50}{100} \div \frac{50}{50} = \overset{w}{7\frac{1}{2}}$$

3. 325%

$$\overset{w}{3.25} \\ 3\frac{25}{100} \div \frac{25}{25} \\ = \overset{w}{3\frac{1}{4}}$$

4. 0.3%

$$\overset{w}{0.003} \\ \overset{w}{\frac{3}{1000}}$$

5. 0.8%

$$\overset{w}{0.008} \\ \frac{8}{1000} \div \frac{8}{8} = \overset{w}{\frac{1}{125}}$$

6. 0.48%

$$\overset{w}{0.0048} \\ \frac{48}{10000} \div \frac{16}{16} = \overset{w}{\frac{3}{625}}$$

Examples

Write each decimal as a percent.

2.17

$$2.17 = \underbrace{217}_{\text{Multiply by 100.}} \\ = 217\%$$

0.0034

$$0.0034 = \underbrace{000,34}_{\text{Multiply by 100.}} \\ = 0.34\%$$

Exercises

Write each decimal as a percent.

7. 2.6

$$2.60 = \underbrace{260}_{\text{Multiply by 100.}} \\ = 260\%$$

8. 19.

$$19.00 = \underbrace{1900}_{\text{Multiply by 100.}} \\ = 1,900\%$$

$$9. 5.14 = \underbrace{514}_{\text{Multiply by 100.}} \\ = 514\%$$

$$10. 0.008 = \underbrace{0.8}_{\text{Multiply by 100.}} \\ = 0.8\%$$

$$11. 0.0014 = \underbrace{0.14}_{\text{Multiply by 100.}} \\ = 0.14\%$$

$$12. 0.0067 = \underbrace{0.67}_{\text{Multiply by 100.}} \\ = 0.67\%$$

White board practice:

Write each percent as a decimal and as a mixed number or fraction in simplest form.

$$225\% = 2.25 = 2 \frac{25}{100} = 2 \frac{25}{25} = 2 \frac{1}{4}$$

$$550\% = 5.50 = 5 \frac{50}{100} = 5 \frac{50}{50} = 5 \frac{1}{2}$$

0.8%

.02%

$$0.0002 = \frac{2}{10,000} = \frac{2}{2} \div \frac{5000}{5000} = \frac{1}{5000}$$

Write each decimal as a percent.

$$7.2 = 720\%$$

$$0.0078 = 0.78\%$$

Write each mixed number or fraction as a percent.

$$4 \frac{1}{2} \times \frac{5}{5} = 4 \frac{5}{10} = 4.50 = 450\%$$

$$2 \frac{1}{4} = \frac{9}{4}$$

$$4 \frac{1}{2} = \frac{9}{2} \times \frac{50}{50} = \frac{450}{100} = 450\%$$

$$\frac{3}{25}$$

Write each percent as a decimal.

$$\frac{17}{20}\% = \frac{17}{20} \times \frac{5}{5} = \frac{85}{100} = 0.85\% = 0.0085$$

$$\frac{13}{25}\%$$

In-Class Assignment:

Lesson 4 Extra Practice

Percents Greater than 100% and Percents Less than 1%

Write each percent as a decimal and as a mixed number or fraction in simplest form.

1. 895%

2. 555%

3. 480%

4. 920%

5. 122%

6. 0.3%

7. 0.42%

8. 0.78%

9. 0.99%

Write each mixed number as a percent.

10. $8\frac{1}{4}$

11. $7\frac{13}{20}$

12. 10

13. 14

14. $16\frac{1}{5}$

15. $44\frac{3}{10}$

16. $12\frac{1}{2}$

17. $2\frac{3}{4}$

18. $6\frac{1}{2}$

Write each decimal as a percent.

19. 3.5

20. 12

21. 6.78

22. 1.95

23. 0.002

24. 0.0077

25. 0.0056

26. 0.0064

27. 0.0102

