

6th Grade
Jan. 5, 2021

Welcome back! :)

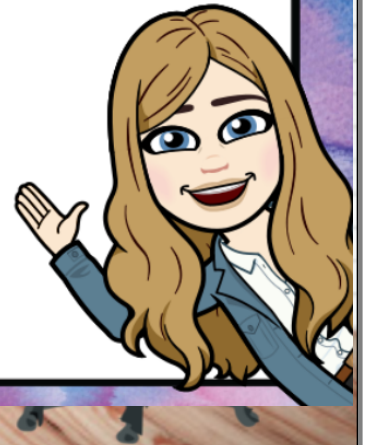
Today we will:
-review HW
-work on in-class WS

HOMEWORK:

Complete WS

THQ due FRIDAY

ALEKS assignment:
60 min and 5 topics
due Jan 12



Yesterday's homework:

Independent Practice

Go online for Step-by-Step Solutions

eHelp

Write each decimal as a fraction in simplest form. (Examples 1–3)

1. $0.5 = \frac{1}{2}$

show your work
 $0.5 = \frac{5}{10}$

2. $0.7 = \frac{7}{10}$

3. $0.33 = \frac{33}{100}$

4. $0.875 = \frac{7}{8}$

$\frac{875}{1000} \div \frac{5}{5} = \frac{175}{200} \div \frac{5}{5} = \frac{35}{40} \div \frac{5}{5} = \frac{7}{8}$

Write each fraction or mixed number as a decimal. (Examples 5 and 6)

5. $\frac{77}{200} = 0.385$ $200 \overline{) 77.00}$ 6. $\frac{1}{20} = 0.05$

$\frac{77}{200} \times \frac{5}{5} = \frac{385}{1000}$ $\frac{1}{20} \times \frac{5}{5}$

7. $\frac{12}{75} = 0.16$

$\frac{12}{75} \div \frac{3}{3} = \frac{4}{25} \div \frac{4}{4} = \frac{16}{100}$

8. $8\frac{21}{40} = 8.525$

$\frac{21}{40} \times \frac{25}{25} = \frac{525}{1000}$
 $40 \overline{) 21.000}$

9. **STEM** Mercury orbits the Sun in $87\frac{24}{25}$ Earth days. Venus orbits the Sun in $224\frac{7}{10}$ Earth days, and Mars orbits the Sun in $686\frac{49}{50}$ days. Write each mixed number as a decimal. (Example 6)

Mercury: 87.96; Venus: 224.7; Mars: 686.98

10. **STEM** Last week, a share of stock gained a total of 1.64 points. Express this gain as a mixed number in simplest form. (Example 4)

$1\frac{16}{25}$
 $1\frac{64}{100} \div \frac{4}{4} = 1\frac{16}{25}$

11. **MP Use Math Tools** The table shows the ingredients in an Italian sandwich.

a. What fraction of a pound is each ingredient?
meat: $\frac{7}{20}$; vegetables: $\frac{3}{20}$; sauce: $\frac{1}{20}$; bread: $\frac{1}{20}$

b. How much more meat is in the sandwich than vegetables? Write the amount as a fraction in simplest form.

$\frac{1}{5}$ lb
 $\frac{7}{20} - \frac{3}{20}$

$0.35 - 0.15 = 0.20$

$\frac{20}{100} \div \frac{20}{20} = \frac{1}{5}$

c. What is the total weight of the Italian sandwich? Write the amount as a fraction in simplest form.

$\frac{3}{5}$ lb

$\frac{60}{100} \div \frac{20}{20} = \frac{3}{5}$

| Ingredient | Amount (lb) |
|--------------|----------------------------------|
| meat | 0.35 = $\frac{35}{100}$ |
| vegetables | 0.15 = $\frac{15}{100}$ |
| secret sauce | 0.05 $\rightarrow \frac{5}{100}$ |
| bread | 0.05 $\rightarrow \frac{5}{100}$ |

$0.35 + 0.15 + 0.05 + 0.05 = 0.60$

Lesson 1 Skills Practice***Decimals and Fractions***

Write each decimal as a fraction or mixed number in simplest form.

1. 0.6

2. 10.9

3. 0.08

4. 6.25

5. 4.125

6. 0.075

7. 9.35

8. 3.56

9. 8.016

10. 21.5

11. 0.055

12. 7.42

change to decimal.

13. ~~3~~

$1\frac{1}{4}$

14. ~~5~~

$10\frac{8}{20}$

15. ~~8~~

$1\frac{1}{8}$

Write each fraction or mixed number as a decimal.

16. $\frac{5}{8}$

17. $3\frac{7}{8}$

18. $9\frac{2}{5}$

19. $\frac{66}{200}$

20. $\frac{3}{20}$

21. $6\frac{5}{8}$

22. $5\frac{2}{5}$

23. $12\frac{3}{8}$

24. $10\frac{17}{20}$

25. $2\frac{7}{16}$

26. $3\frac{11}{16}$

27. $6\frac{4}{5}$

