

6th Grade
Feb 4, 2021

Today we will:

-collect THQ

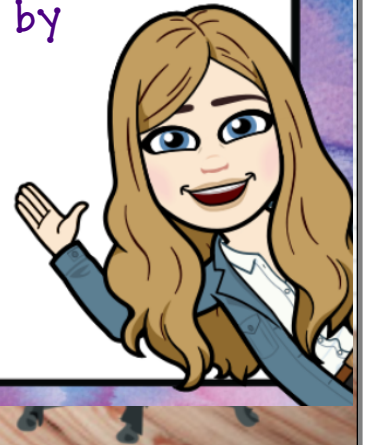
-work on 2-5 Skills
Practice WS

HOMEWORK:

Complete Skills WS

Project due FRIDAY

ALEKS assignment:
60 min and 5 topics
due Monday by
11:59pm



Lesson 5 Skills Practice

****DO EVENS ONLY******Compare and Order Fractions, Decimals, and Percents**

Replace each \bullet with $<$, $>$, or $=$ to make a true statement. Prove your answer by changing EACH number to the same form (same denominator if both fractions OR both fractions OR both decimals)

1. $\frac{2}{3} \bullet \frac{3}{4}$

2. $\frac{3}{8} \bullet \frac{6}{16}$

3. $\frac{6}{8} \bullet \frac{7}{12}$

$$\frac{3}{8} \times \frac{2}{2} = \frac{6}{16}$$

$$4. \frac{1}{2} \bullet \frac{6}{7}$$

$\frac{1}{2} \times \frac{7}{7} = \frac{7}{14}$
 $\frac{6}{7} \times \frac{2}{2} = \frac{12}{14}$

5. $\frac{3}{9} \bullet \frac{1}{3}$

6. $\frac{1}{6} \bullet 0.9$

$$\frac{1}{6} \times \frac{10}{10} = \frac{10}{60}$$

$$\frac{9}{10} \times \frac{6}{6} = \frac{54}{60}$$

7. $\frac{5}{6} \bullet \frac{7}{8}$

8. $\frac{5}{8} \bullet \frac{5}{12}$

9. $\frac{4}{5} \bullet \frac{2}{3}$

$$\frac{5}{8} \times \frac{3}{3} = \frac{15}{24}$$

$$\frac{5}{12} \times \frac{2}{2} = \frac{10}{24}$$

10. $\frac{6}{7} \bullet 80\%$

11. $\frac{5}{12} \bullet \frac{3}{16}$

12. $0.75 \bullet \frac{2}{9}$

$$7 \overline{) 0.8500}$$

$$\underline{-56} $$

$$40 $$

$$\underline{-35} $$

$$5 $$

$\rightarrow 0.80$

13. $\frac{5}{7} \bullet 0.7$

14. $\frac{2}{15} \bullet \frac{1}{6}$

15. $\frac{5}{12} \bullet \frac{2}{5}$

16. $2\frac{3}{10}$ \bullet $2\frac{5}{14}$

17. $5\frac{4}{9}$ \bullet $5\frac{3}{7}$

18. $1\frac{3}{5}$ \bullet $1\frac{5}{9}$

19. $4\frac{1}{6}$ \bullet $4\frac{2}{12}$

20. $1\frac{7}{9}$ \bullet $1\frac{4}{7}$

21. 8.9 \bullet $8\frac{11}{12}$

3.25

22. $3\frac{1}{4} = 3.25$

23. $6\frac{8}{9}$ \bullet $6\frac{7}{8}$

24. $11\frac{2}{9}$ \bullet $11\frac{4}{15}$

$$\begin{array}{r} 4 \overline{) 13.25} \\ \underline{8} \\ 5 \\ \underline{4} \\ 10 \\ \underline{8} \\ 20 \\ \underline{20} \\ 0 \end{array}$$

Order the fractions from least to greatest.

25. $\frac{3}{4}, \frac{2}{5}, \frac{5}{8}, \frac{1}{2}$

26. $\frac{1}{3}, \frac{2}{7}, \frac{3}{14}, \frac{1}{6}$

27. $\frac{2}{3}, \frac{4}{9}, \frac{5}{6}, \frac{7}{12}$

28. $\frac{4}{5}, \frac{2}{3}, \frac{13}{15}, \frac{7}{9}$

29. $8\frac{11}{12}, 8\frac{5}{6}, 8\frac{3}{4}, 8\frac{9}{16}$

30. $2\frac{28}{60}, 2\frac{36}{60}, 2\frac{25}{60}, 2\frac{30}{60}$

15, 30, 45, 60

$$\frac{7}{15} \times \frac{4}{4} = \frac{28}{60}$$

$$\frac{3}{5} \times \frac{12}{12} = \frac{36}{60}$$

$$\frac{5}{12} \times \frac{5}{5} = \frac{25}{60}$$

$$\frac{1}{2} \times \frac{30}{30} = \frac{30}{60}$$

$2\frac{5}{12}, 2\frac{7}{15}, 2\frac{1}{2}, 2\frac{3}{4}$

