



6/3/21
6th Grade



Tasks for TODAY:

Task 1: Watch video notes

Task 2: Complete notes

Task 3: Complete WS

Task #1:

Go to Edpuzzle and take notes while you watch the video that is dated for today, June 3, on line graphs.

Do NOT click to watch through another website--you will not get credit on Edpuzzle.

Then come back here to complete the rest of the tasks on the following slides. Follow directions as you go to complete all assignments for today.



Lesson 5 Reteach

Interpret Line Graphs

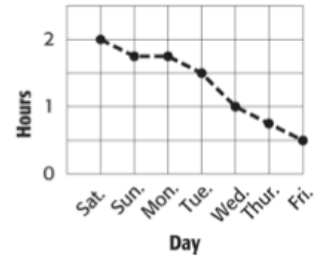
Because they show trends over time, line graphs are often used to predict future events.

Example

The graph shows the time Ruben spends each day practicing piano scales. Predict how much he will spend practicing his scales on Friday.

Continue the graph with a dotted line in the same direction until you reach a vertical position for Friday. By extending the graph, you see that Ruben will probably spend half an hour practicing piano scales on Friday.

Piano Scale Practice Times



Exercises

MONEY Use the graph that shows the price of a ticket to a local high school football game over the last few years.

1. Has the price been increasing or decreasing? Explain.

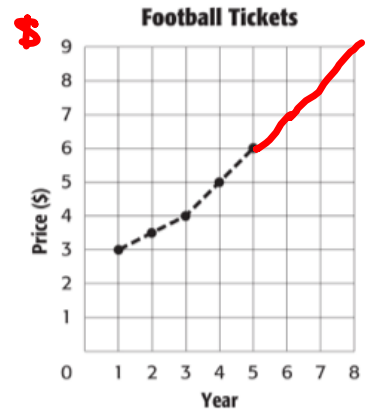
increasing - Graph goes up to the right

2. Predict the price of a ticket in year 6 if the trend continues.

\$7

3. In what year do you think the price will reach \$9.00 if the trend continues?

Year 8



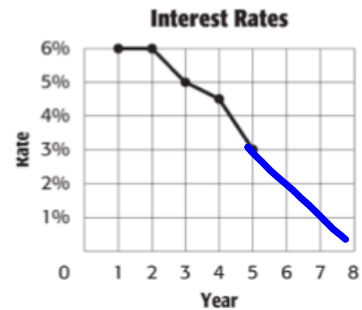
BANKS Use the graph that shows the interest rate for a savings account over the last few years.

4. What does the graph tell you about interest rates?

Rates are decreasing

5. If the trend continues, when will the interest rate reach 1 percent?

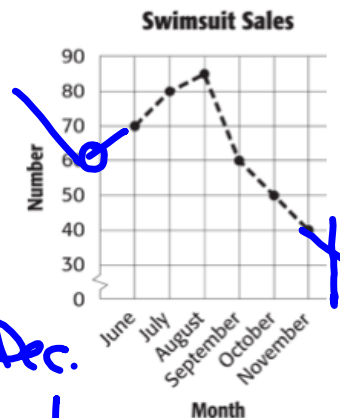
year 7



Lesson 5 Homework Practice

Interpret Line Graphs

SPORTS For Exercises 1–3, use the graph at the right.



- Describe the change in the number of swimsuits sold.

It increases until Aug, then decreases.

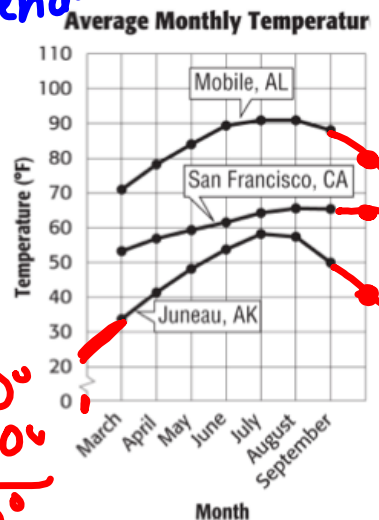
- Predict the number of swimsuits sold in December. Explain your reasoning.

Around 30. We expect another decrease in Dec.

- Predict the number of swimsuits sold in May. How did you reach this conclusion?

Around 60, to continue the upward trend.

WEATHER For Exercises 4–7, use the graph at the right.



- Predict the average temperature for Juneau in February.

About 25°

- Predict the average temperature for Mobile in October.

About 80°

- What do you think is the average temperature for San Francisco in October?

About 65°, maybe 63°

- How much colder would you expect it to be in Juneau than in Mobile in October?

40° colder

*Mobile = 80°
Juneau = 40°*

40°

BASEBALL For Exercises 8–9, use the table that shows the number of games won by the Florida Gators men's baseball team from 2002 to 2007.

Florida Gators Baseball Statistics						
Year	2002	2003	2004	2005	2006	2007
Games Won	46	37	43	48	28	29

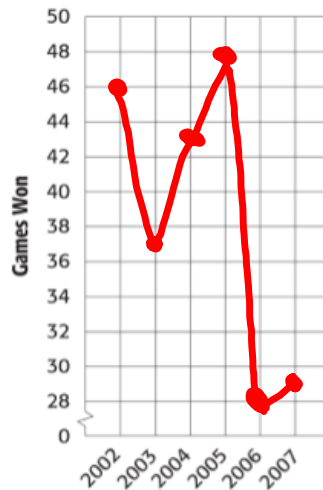
- Make a line graph of the data.

6 5

- In what year did the team have the greatest increase in the number of games won?

2004

University of Florida Gators Baseball Statistics





Task #2

Complete the notes that I skipped in the video.





Task #3

After copying the slides notes, complete your worksheet on the next slide, Pg 907 #10-13. This is due TOMORROW, Friday.

Don't forget to also update your table of contents (last slide). Keep up with it EACH DAY!!!



10. Use the graph at the right.

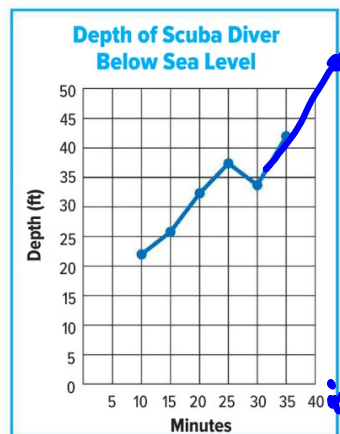
a. Describe the change in depth from 10 minutes to 35 minutes.

His depth is generally increasing.

b. Predict the depth at 45 minutes. 55 or 60

c. Predict when the depth will be more than 65 feet.

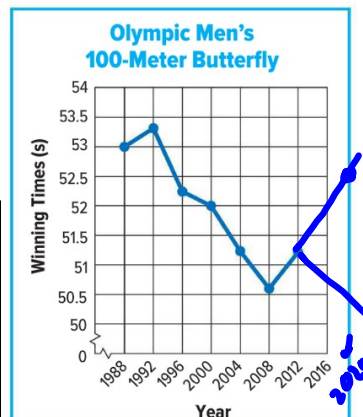
50 or 55 min.



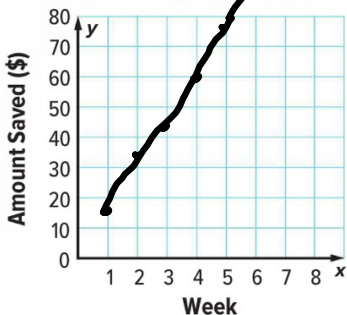
11. Use the line graph at the right.

a. Between which years did the winning time change the most?

Explain your reasoning. 1992-96



12. The table shows the amount of money Kailey has saved after 5 weeks. Construct a line graph of the data.



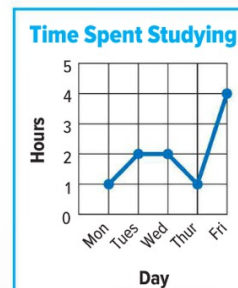
Week	Amount Saved (\$)
1	15
2	34
3	42
4	60
5	78

Predict how much Kailey will have saved after Week 8.

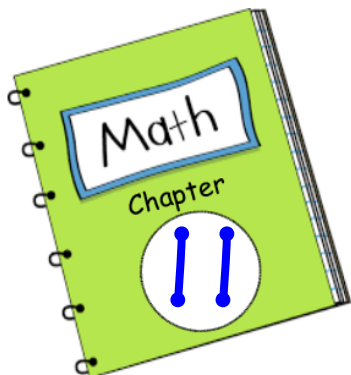
120-125

13. The graph shows the amount of time Mia spent studying last week. Determine if each statement is true or false.

- a. The amount of time increased the most from Thursday to Friday. True False
- b. Mia spent the same amount of time studying on Monday and Wednesday. True False
- c. The amount of time decreased from Monday to Tuesday. True False



Please update your table of contents:



TITLE: Statistical Measures

Date	Lesson	Topic/Assignment
May 17	1-2	Mean, Median, Mode, Range Video Notes
May 17	1-2	Practice WS
May 18	3	Quartiles, IQR, Outliers Video Notes
May 19	1-3	HW Practice WS
May 19	3	Skills Practice WS
Unit 12: Statistical Displays		
May 26	1	Line Plots Video Notes
May 26	1	HW Practice WS
May 27	2	Histograms Video Notes
May 27	2	HW Practice WS
May 28	1-2	Review WS
June 1	3	Box Plots In-Class Notes
June 1	3	Pg 883 WS
June 2	3	HW Practice WS
June 3	5	Line Graphs Packet